

REINFORCING STEEL SCHEDULE (A.S.T.M. A-615 GRADE 60)						
COLD FORM BARS TO INSIDE DIMENSIONS			A B			
SYM	QTY	SIZE	LOCATION, DIRECTION	A	B	WGT
ST1	24	#6	FOOTERS, LATERAL	138.00		415
ST2	2	#5	ENDS, LATERAL	138.00		24
ST2	20	#5	APPROACHES, LATERAL	138.00		239
ST3	24	#5	APPROACHES, LONG.	114.00		237
L1	22	#5	APPROACH TO END TIES	27.00	31.00	111

LI GIVEN WITH NO RISER BASEPLATES. DIMENSION "B" WILL VARY WITH THE ACTUAL HEIGHT OF RISERS USED, AS FOLLOWS:

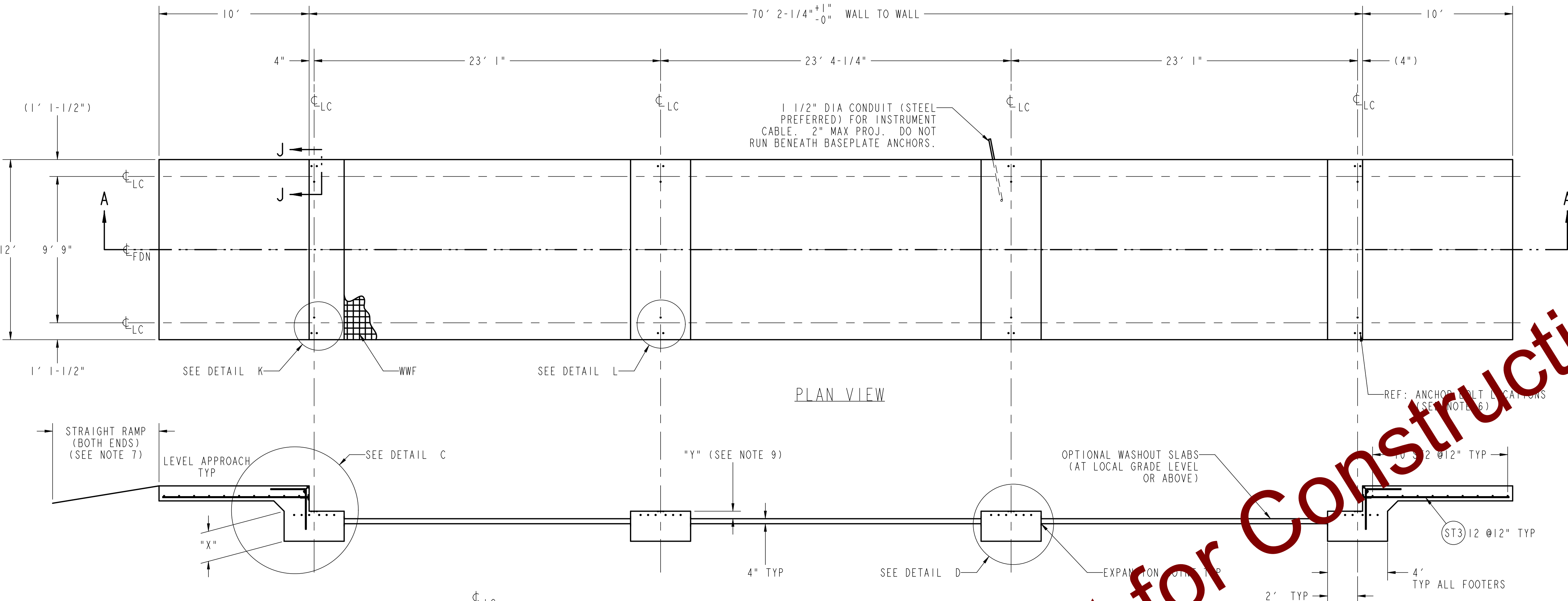
NO RISERS	"B"
3" RISERS	31"
6" RISERS	34"
	37"

MATERIAL SUMMARY * (INCLUDES FOOTERS & APPROACHES) (ASSUMES NO RISERS)	FOOTER DEPTH: "X" INCHES (24 INCH MINIMUM)				
	24	36	48	60	72
CONCRETE (CU. YDS.)	24.5	31.5	39	46	53
REINFORCING STEEL (LBS)	1026				

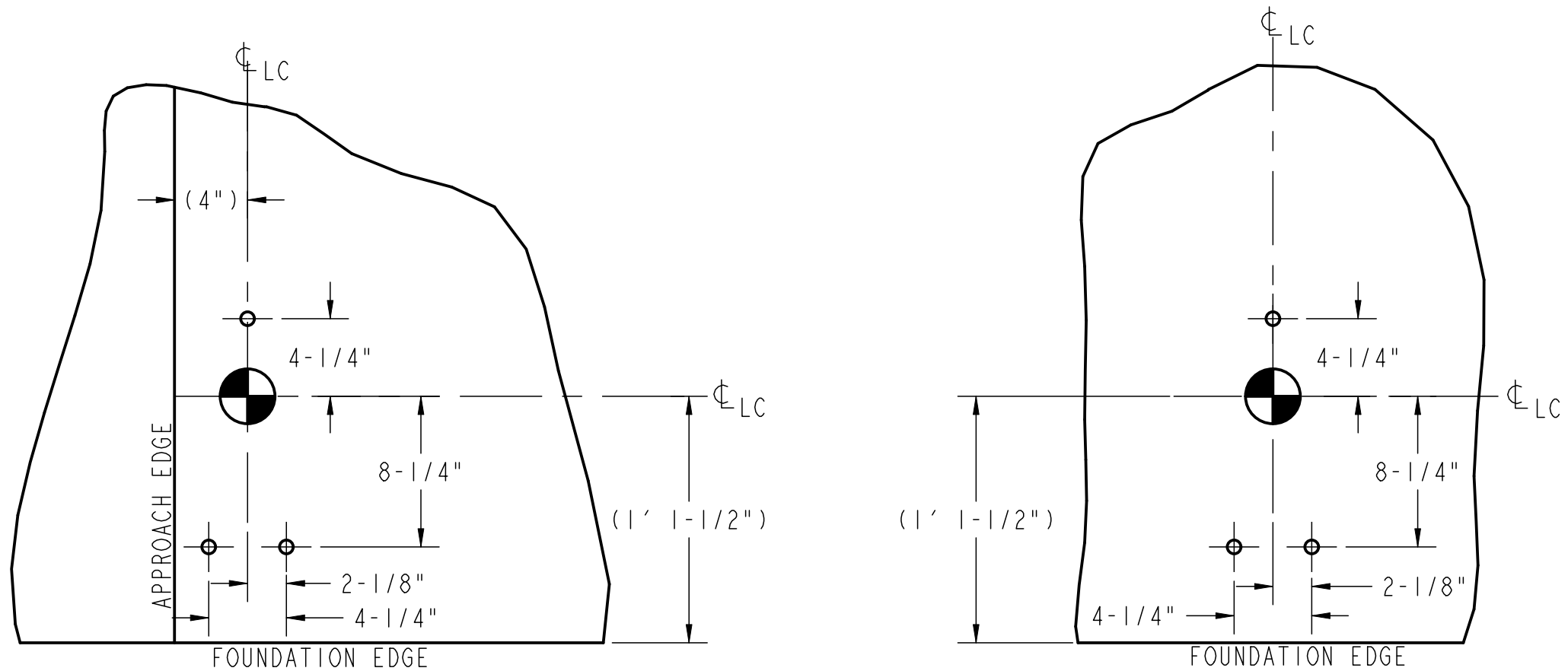
\* IF OPTIONAL WASHOUT SLABS ARE USED, ADD  
700 SQ. FT. OF WWF: 6x6-W1.4xW1.4  
9 CU. YD. OF CONCRETE.

- NOTES:
- 1) USE MINIMUM 3000 PSI STRENGTH CONCRETE AT 28 DAYS WITH 5-7% AIR ENTRAINMENT.
  - 2) USE MINIMUM 60KSI YIELD DEFORMED REINFORCING STEEL. REBAR MINIMUM DEPTH OF COVER SHOULD BE IN ACCORDANCE WITH THE LATEST ACI BUILDING CODE REQUIREMENTS FOR STRUCTURAL CONCRETE (ACI 318-SECTION 7.7), UNLESS OTHERWISE SPECIFIED.
  - 3) FOUNDATION REQUIRES 2500 PSF RATED SOIL.
  - 4) TOP OF CONCRETE AT BASEPLATE LOCATIONS TO BE LEVEL AND IN ONE PLANE  $\pm 1/8"$ .
  - 5) IMPORTANT: DIAGONAL MEASUREMENTS ENDWALL TO ENDWALL MUST BE EQUAL WITHIN  $1/2"$ .
  - 6) BASEPLATE ANCHORS SUPPLIED BY METTLER TOLEDO. USE BASEPLATES AS TEMPLATES TO LOCATE ANCHORS DURING SCALE INSTALLATION.
  - 7) RAMP LENGTH: -PER LOCAL REGULATIONS  
- $1/2"$  SLOPE PER FOOT TYPICAL
  - 8) BOTTOM OF FOOTERS MUST BE BELOW LOCAL FROSTLINE.
  - 9) FOOTER HEIGHT "Y" CAN BE VARIED TO SUIT LOCAL CLEARANCE REQUIREMENTS. TOP OF FOOTER AT GRADE LEVEL (I.E. FLUSH WITH WASHOUT SLABS) PROVIDES STANDARD 10" CLEARANCE BETWEEN BOTTOM OF WEIGHBRIDGE AND WASHOUT SLABS.
  - 10) OPTIONAL: 6" OF GRAVEL MAY BE USED UNDER APPROACHES TO IMPROVE DRAINAGE. REFER TO LOCAL BUILDING CODES FOR BASE REQUIREMENTS.
  - 11) CONTRACTOR SUPPLIES:
    - EXCAVATION
    - REINFORCING STEEL
    - CURB ANGLE ASSEMBLIES (DETAIL C)
    - BUMPER PLATE ASSEMBLIES (VIEWS J-J & N-N)
    - CONCRETE AND FORMS
    - $1\ 1/2"$  DIA CONDUIT (STEEL PREFERRED)

REV	CHANGE	BY	DATE	SCALE 0.020	DATE 7/23/10	METTLER TOLEDO
A	PIER HEIGHTS IN TABLE WERE 20, 32, 44, 56, 68	JLB	7/27/10			
B	UPDATED HEIGHT NOTE IN DETAIL C	KRS	11/02/10			
C	DIMS CONVERTED FROM INCHES TO FEET	NLD	05/05/17			
	UPDATED DWG TO N109 WAS [TC208422]					
TITLE VTC10X FOUNDATION, VARIABLE FOOTER, 70' X 11', 3-MOD, WITH RISER OPTIONS						
UNLESS OTHERWISE SPECIFIED, ALL DIMENSIONS ARE IN INCHES, AND DIMENSIONAL TOLERANCES ARE: FRACTIONAL DECIMAL ANGULAR $\pm 1/16$ $\pm .1$ $\pm 5^\circ$ .XX $\pm .02$ .X $\pm .5$ .XXX $\pm .005$						
THIS PRINT IS FURNISHED WITH THE UNDERSTANDING THAT THE ESSENCE THEREOF WILL NOT BE REPRODUCED IN WHOLE OR IN PART WITHOUT WRITTEN AUTHORIZATION OF METTLER-TOLEDO, INC. ALL DESIGNS ARE THE PROPERTY OF METTLER-TOLEDO, INC. AND WILL BE PROTECTED BY PATENTS.						
61805951						REV



PLAN VIEW

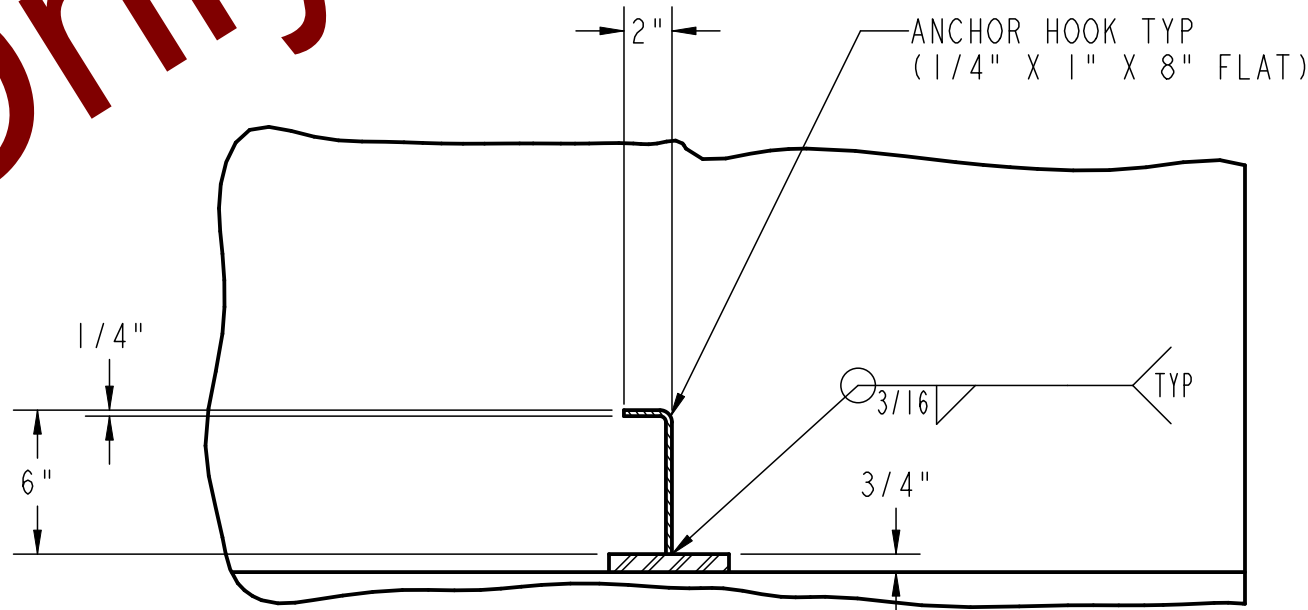


DETAIL K

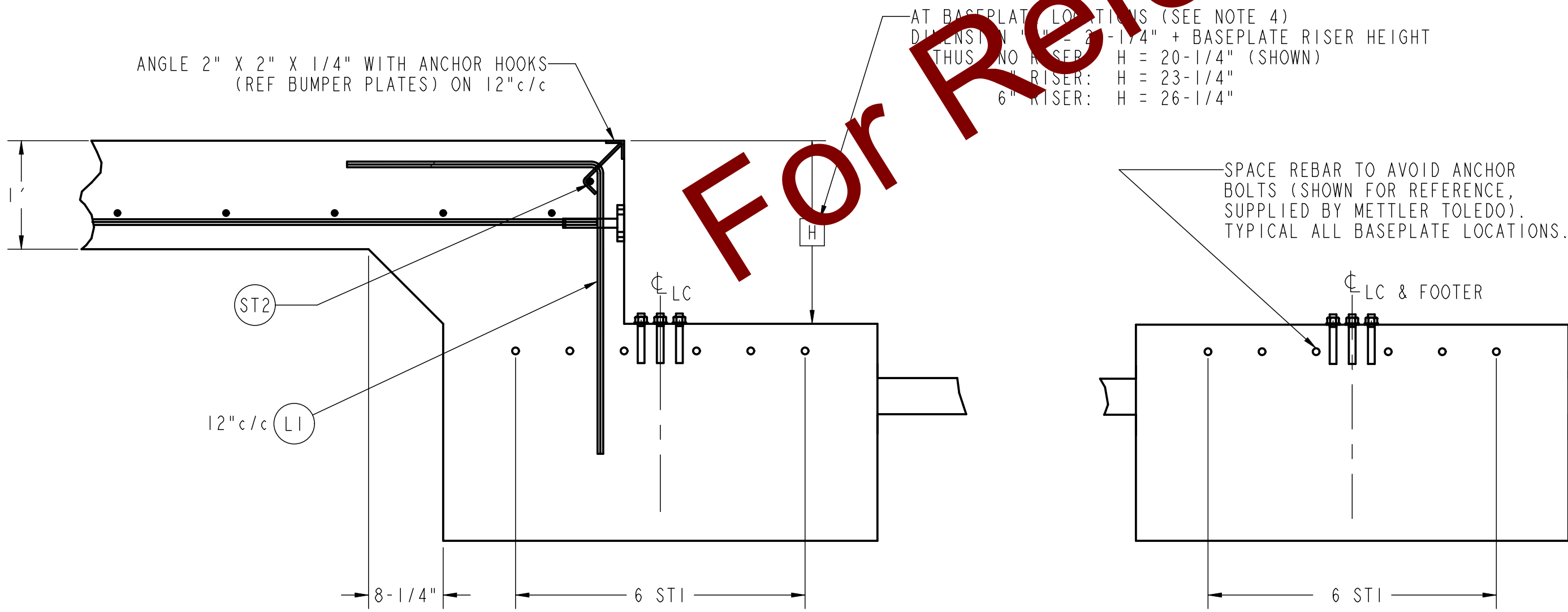
SCALE 0.125  
ANCHOR BOLT LOCATIONS - TYP END FOOTER  
(OTHER SIDE IS OPPOSITE)

DETAIL L

SCALE 0.125  
ANCHOR BOLT LOCATIONS - TYP MIDDLE FOOTER  
(OTHER SIDE IS OPPOSITE)



SECTION N-N

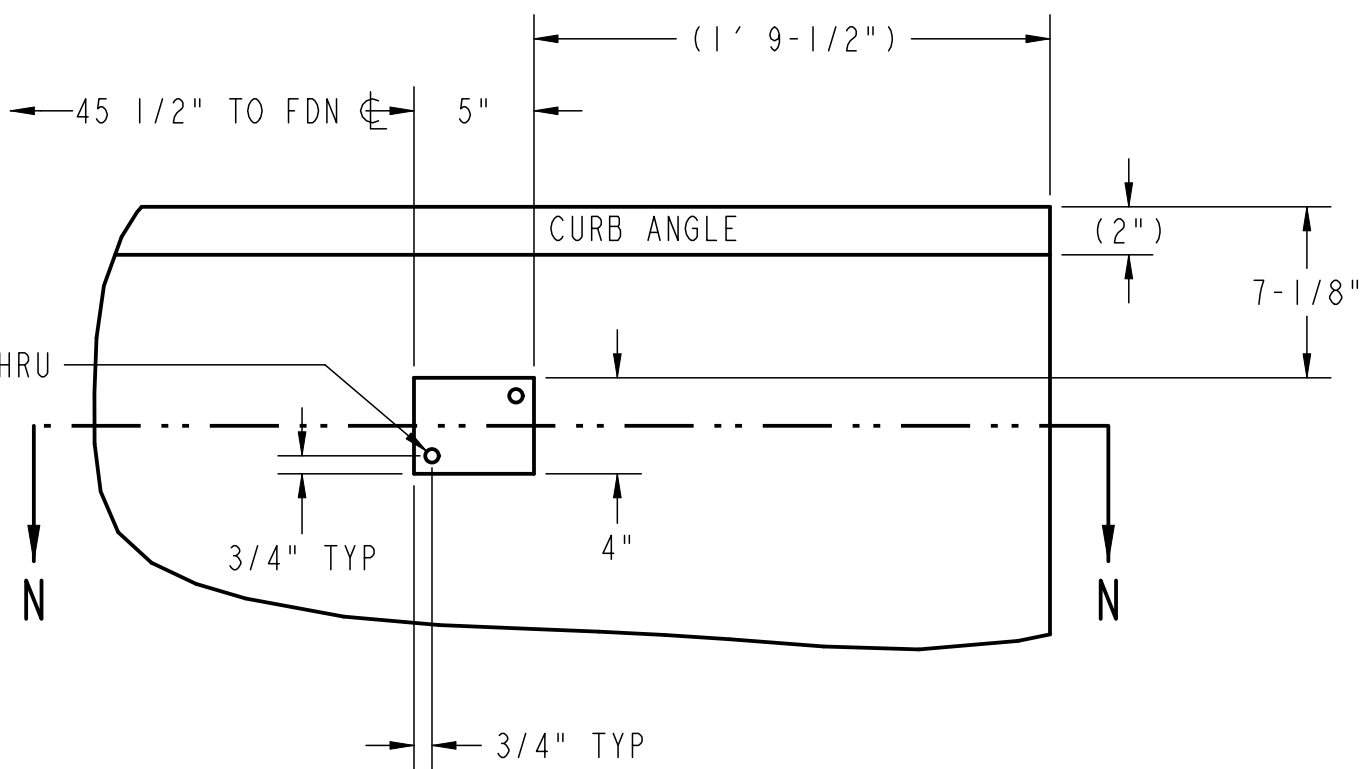


DETAIL C

SCALE 0.083  
(TYPICAL END)

DETAIL D

SCALE 0.083  
(TYP SINGLE BASEPLATE FOOTER)



SECTION J-J

SCALE 0.125  
BUMPER PLATE ASSY'S: TWO EACH END.  
MATERIAL: H.R. STEEL (BY OTHERS).